



**E & A CONSULTING GROUP, INC.**

*Engineering Answers*

10909 Mill Valley Road, Suite 100 • Omaha, NE 68154-3950  
P 402.895.4700 • F 402.895.3599  
www.eacg.com

Dear Homeowner:

The SID has contracted concrete work to be done on the streets in your SID. A contractor will be on site to do work which includes removing the existing concrete that is damaged and replacing it with new pavement.

Throughout the course of this project, there could be some minimal damage done to yards and or sprinkler systems. The contractor that is on site will be responsible for replacing any damaged sprinkler lines and/or heads. They will also be replacing any sod that is torn up while on site. Once the new sod is laid, it will be the responsibility of the homeowner at each lot to water the new sod until it has re-established itself.

Before starting the work on site, each contractor must put in a call and have all the utilities in the area located. You might notice some areas in your yard that have been flagged and/or spray painted. This does not indicate the area in which they will be working. It is just to give them an idea of what kind of utilities are in the area that could possibly be hit while the contractor is on site working.

All work that is completed in public Right-of-Way and follow City of Omaha and Sarpy County specifications.

The work in your SID should not take longer than 30 days to complete. Please let me know if you have any questions or concerns on this at all.

Thank You,

A handwritten signature in black ink, appearing to read 'Nelson C Flores', written over a horizontal line.

**Nelson C Flores**

Construction Administration Tech.

***Engineering Answers***...by assisting our clients

E & A Consulting Group, Inc.

10909 Mill Valley Road, Suite 100 • Omaha, NE 68154

402.895.4700 (o)

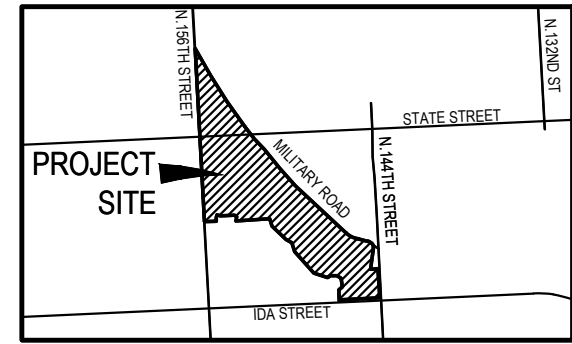
[eacg.com](http://www.eacg.com)



# MEADOW RIDGE-WATERFORD

## 2023 STREET RECONSTRUCTION

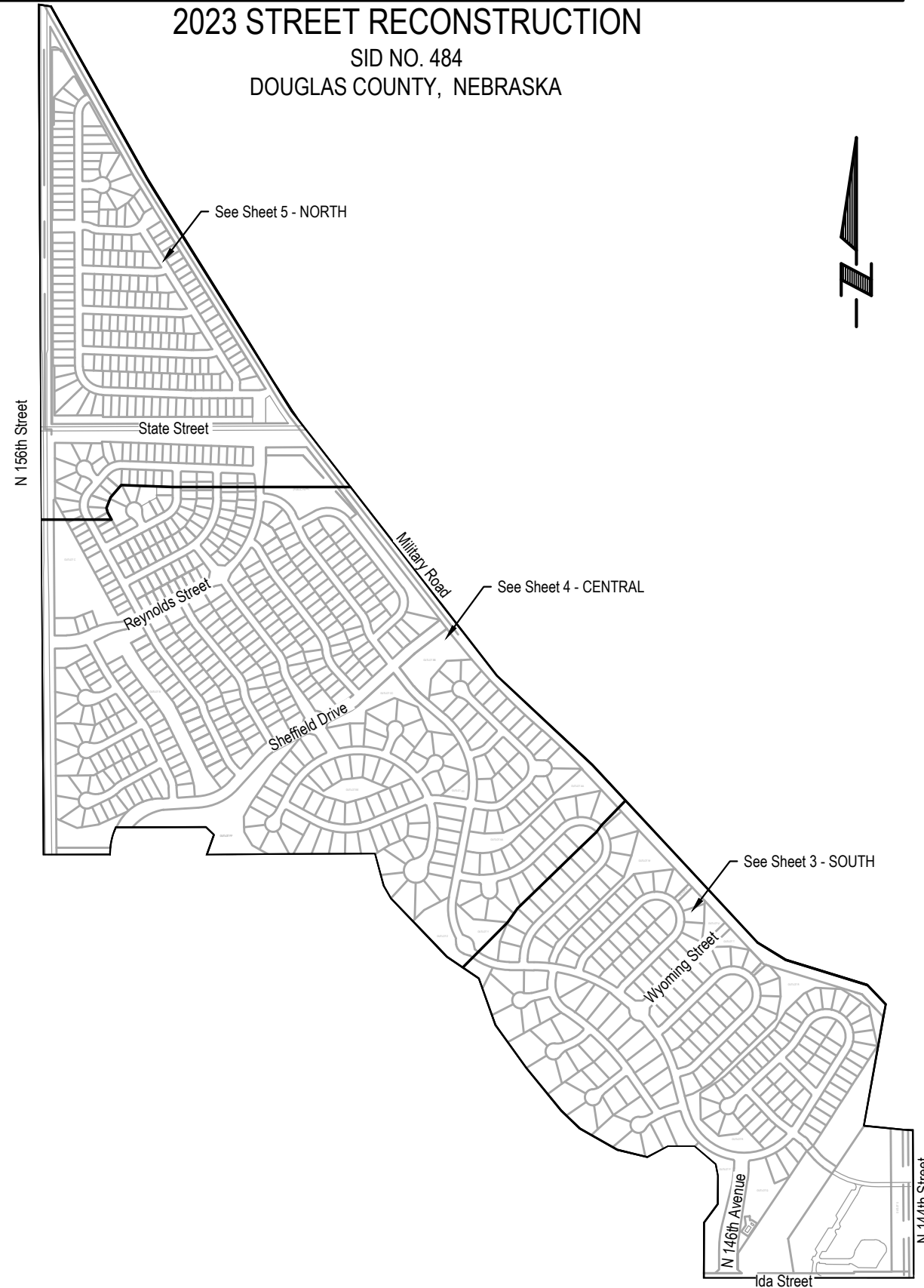
SID NO. 484  
DOUGLAS COUNTY, NEBRASKA



VICINITY MAP

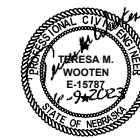
### APPROXIMATE BID QUANTITIES

ITEM	DESCRIPTION	QUANTITY	UNIT
1	CONCRETE PAVEMENT REPAIR, LARGE AREA	800	SY
2	CONCRETE PAVEMENT REPAIR, SMALL AREA	957	SY
3	FULL DEPTH SAW CUT EXISTING PAVEMENT	2,299	LF
4	ADJUST MANHOLE TO GRADE	1	EA
5	REMOVE & REPLACE PCC SIDEWALK	228	SF
6	REMOVE & REPLACE PCC CURB RAMP	519	SF
7	CONSTRUCT DETECTABLE WARNING PANEL (6)	48	SF
8	REMOVE AND REPLACE FAULTY SUBGRADE	25	TN
9	CONSTRUCT SPEED TABLE, SIGNAGE & STRIPING	1	EA
10	INSTALL PERMANENT PREFORMED TAPE SYMBOL - TYPE "BUMP"	1	EA



### INDEX OF SHEETS

SHEET NO.	DESCRIPTION
1	COVER
2	DETAILS
3	SOUTH
4	CENTRAL
5	NORTH
6	TOTAL QUANTITIES
7	COMPOSITE MAP



#### APPLICANT

SID # 484  
Jeff Slobotski, Chairman  
11440 West Center Road, Ste. C  
Omaha, NE 68144  
P: 402.334.0700  
F: 402.334.0815  
jhf@fdjlaw.com

#### DESIGNER

E & A Consulting Group, Inc  
Teresa Wooten, P.E.  
10909 Mill Valley Road, Suite 100  
Omaha, NE 68154  
P: 402.895.4700  
F: 402.895.3599  
twooten@eacg.com

#### INSPECTOR

E & A Consulting Group, Inc  
Randall L. Pierce, P.E.  
10909 Mill Valley Road, Suite 100  
Omaha, NE 68154  
P: 402.895.4700  
F: 402.895.3599  
rpierce@eacg.com

#### CONTRACTOR

**E & A CONSULTING GROUP, INC.**  
Engineering • Planning • Environmental & Field Services  
10909 Mill Valley Road, Suite 100 • Omaha, NE 68154  
Phone: 402.895.4700 • Fax: 402.895.3599  
State of NE Certificate of Authorization #CA0008

---

**MEADOW RIDGE-WATERFORD**  
2023 STREET  
RECONSTRUCTION  
SID 484  
DOUGLAS COUNTY, NEBRASKA

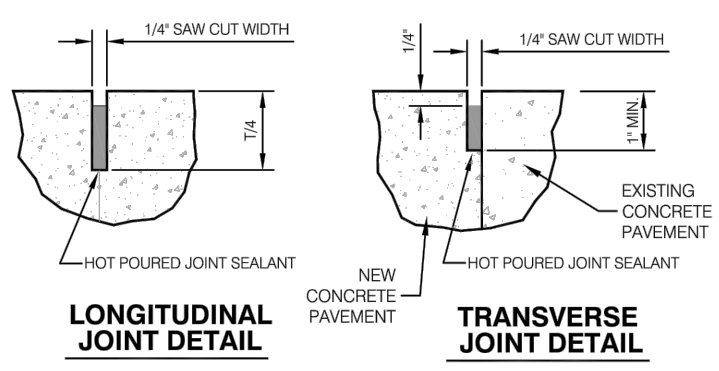
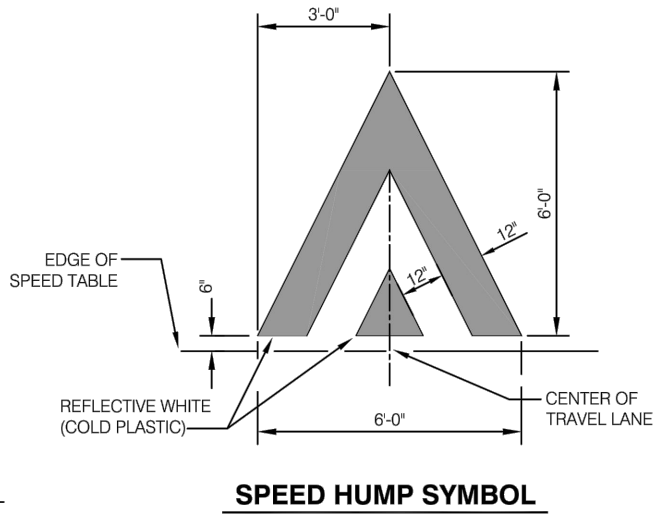
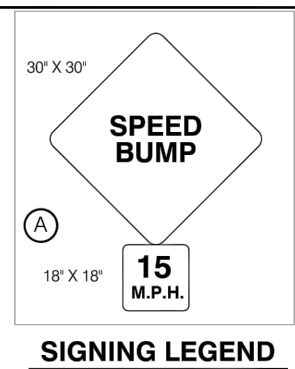
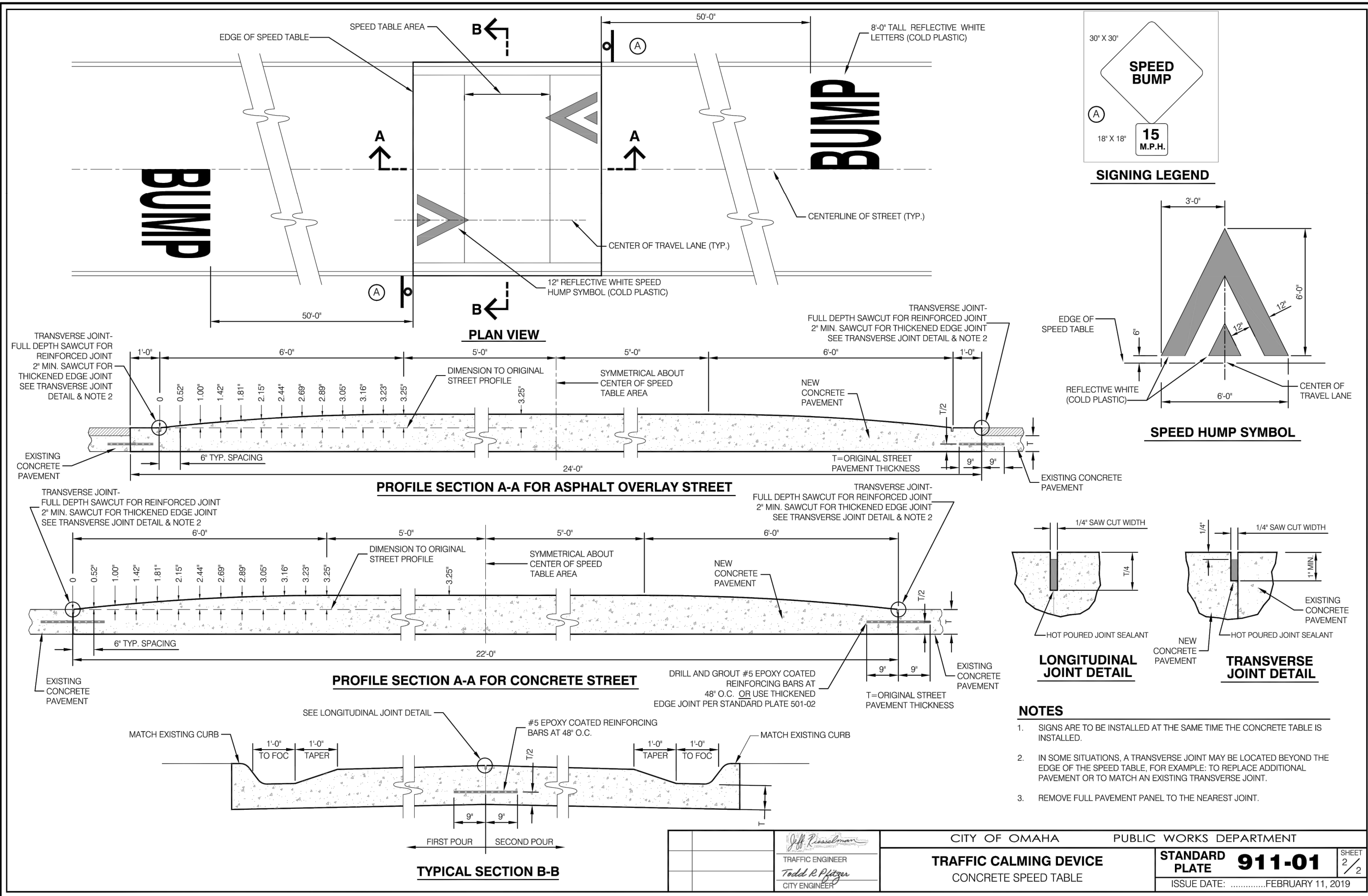
---

**COVER**

---

Revisions  
Date Description  
6/9/2023  
TAM  
JME  
Scale: 1" = 300'  
Sheet: 1 of 7

6/9/2023 2:59 PM  
K:\Projects\2003\201\p27\Engineering\CAD Files\Paving\Meadow Ridge-Waterford 2023 Street Reconstruction-000.dwg  
Jessica Brown



- NOTES**
- SIGNS ARE TO BE INSTALLED AT THE SAME TIME THE CONCRETE TABLE IS INSTALLED.
  - IN SOME SITUATIONS, A TRANSVERSE JOINT MAY BE LOCATED BEYOND THE EDGE OF THE SPEED TABLE, FOR EXAMPLE: TO REPLACE ADDITIONAL PAVEMENT OR TO MATCH AN EXISTING TRANSVERSE JOINT.
  - REMOVE FULL PAVEMENT PANEL TO THE NEAREST JOINT.

**E & A CONSULTING GROUP, INC.**  
Engineering • Planning • Environmental & Field Services  
10809 Mill Valley Road, Suite 100 • Omaha, NE 68154  
Phone: 402.265.4700 • Fax: 402.265.3599  
www.eandagroup.com  
State of NE Certificate of Authorization #CA0008

**E & A CONSULTING GROUP, INC.**  
Engineering Answers

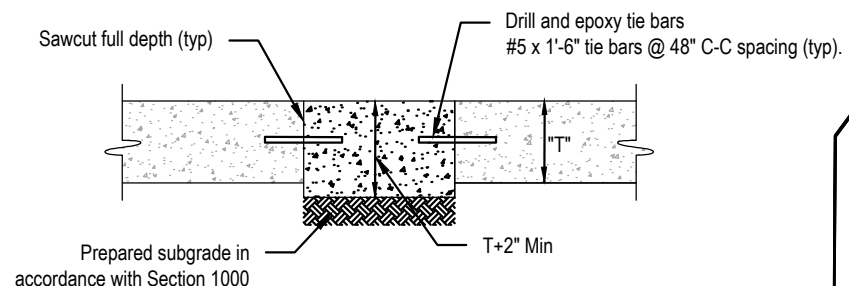
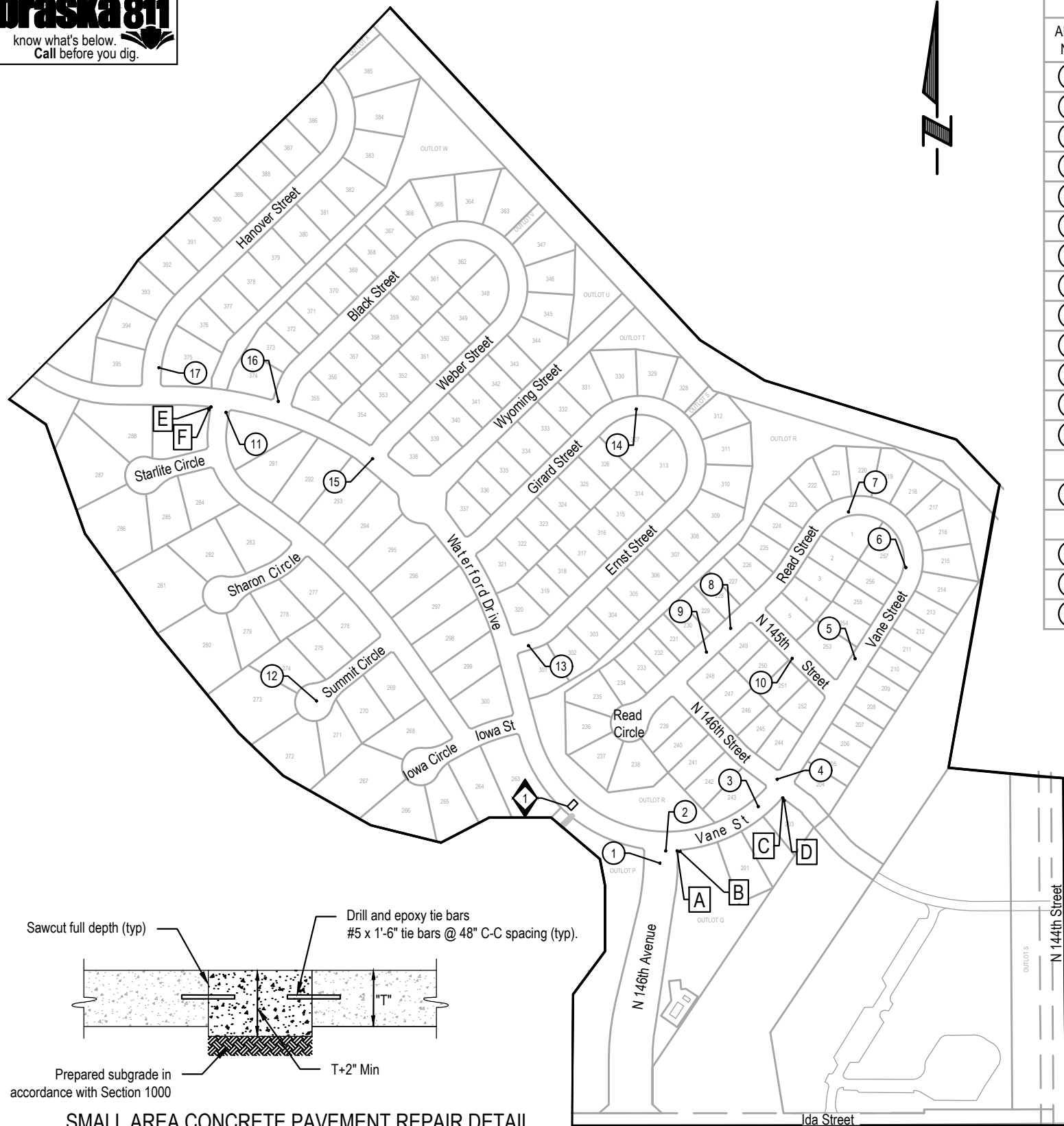
**MEADOW RIDGE-WATERFORD  
2023 STREET  
RECONSTRUCTION**  
SID 484  
DOUGLAS COUNTY, NEBRASKA

**DETAILS**

Proj No: P2003.201027  
Date: 6/9/2023  
Designed By: TAW  
Drawn By: JMB  
Scale: N/A  
Sheet: 2 of 7

6/9/2023 2:59 PM  
K:\Projects\2003\2010\p27\Engineering\CAD Files\Paving\Meadow Ridge-Waterford 2023 Street Reconstruction-000.dwg  
Jessica Brown

CITY OF OMAHA PUBLIC WORKS DEPARTMENT	
TRAFFIC ENGINEER <i>Jeff Reissman</i>	<b>TRAFFIC CALMING DEVICE CONCRETE SPEED TABLE</b>
CITY ENGINEER <i>Todd R. Pitzer</i>	
<b>STANDARD PLATE 911-01</b>	SHEET 2 / 2
ISSUE DATE: .....FEBRUARY 11, 2019	



**SMALL AREA CONCRETE PAVEMENT REPAIR DETAIL**  
NOT TO SCALE

2023 STREET RECONSTRUCTION									
AREA NO.	NO. POURS	SAW CUT L.F.	CURB L.F.	WIDTH	X	LENGTH	LARGE AREA EST S.Y.	SMALL AREA EST S.Y.	NOTES
1	1	50	30	10.0	x	30.0		33.3	
2	2	50	20	12.5	x	30.0		41.7	
3	1	45	15	12.5	x	15.0		20.8	
4	2	85		12.5	x	45.0	62.5		
5	1	55	30	12.5	x	30.0		41.7	
6	1	45	15	12.5	x	15.0		20.8	
7	1	45	15	12.5	x	15.0		20.8	
8	1	85	45	12.5	x	45.0	62.5		
9	1	45	15	12.5	x	15.0		20.8	
10	2	50	30	25.0	x	30.0	83.3		
11	1	20	15	10.0	x	10.0		11.1	
12	1	55		12.5	x	15.0		20.8	
13	2	115	45	12.5	x	15.0	20.8		
14	2	115	45	15.0	x	25.0	41.7		Adjust Manhole
				12.5	x	65.0	90.3		
15	2	50	15	15.0	x	25.0		41.7	
16	1	45	15	12.5	x	15.0		20.8	
17	1	55		12.0	x	30.0		40.0	

2023 STREET RECONSTRUCTION				
AREA NO.	TYPE	APPROX. DIMEN.	EST S.F.	NOTES
A	Curb Ramp	5.5 x 8	44.0	
B	Sidewalk	4 x 25	100.0	
C	Curb Ramp	5.5 x 8	44.0	ADA Plate - Cast Iron
D	Sidewalk	4 x 8	32.0	
E	Curb Ramp	5 x 6	30.0	
F	Sidewalk	4 x 8	32.0	

2023 STREET RECONSTRUCTION - SPEED TABLE				
AREA NO.	TYPE	APPROX. DIMEN.	EST S.Y.	NOTES
1	Speed Table	22 x 25	61.1	See City of Omaha Standard Plate 911-01 Sheet 2 of 2 and Section 911 of City of Omaha Standard Specifications for Public Works Construction 2020



**E & A CONSULTING GROUP, INC.**  
Engineering • Planning • Environmental & Field Services  
10809 Mill Valley Road, Suite 100 • Omaha, NE 68154  
Phone: 402.265.4700 • Fax: 402.265.3599  
www.eandagroup.com  
State of NE Certificate of Authorization #CA0008

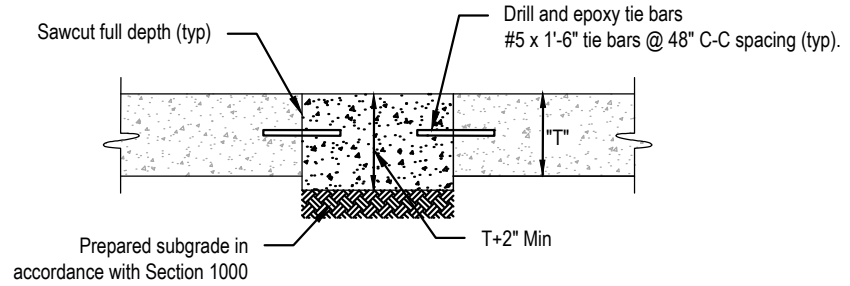
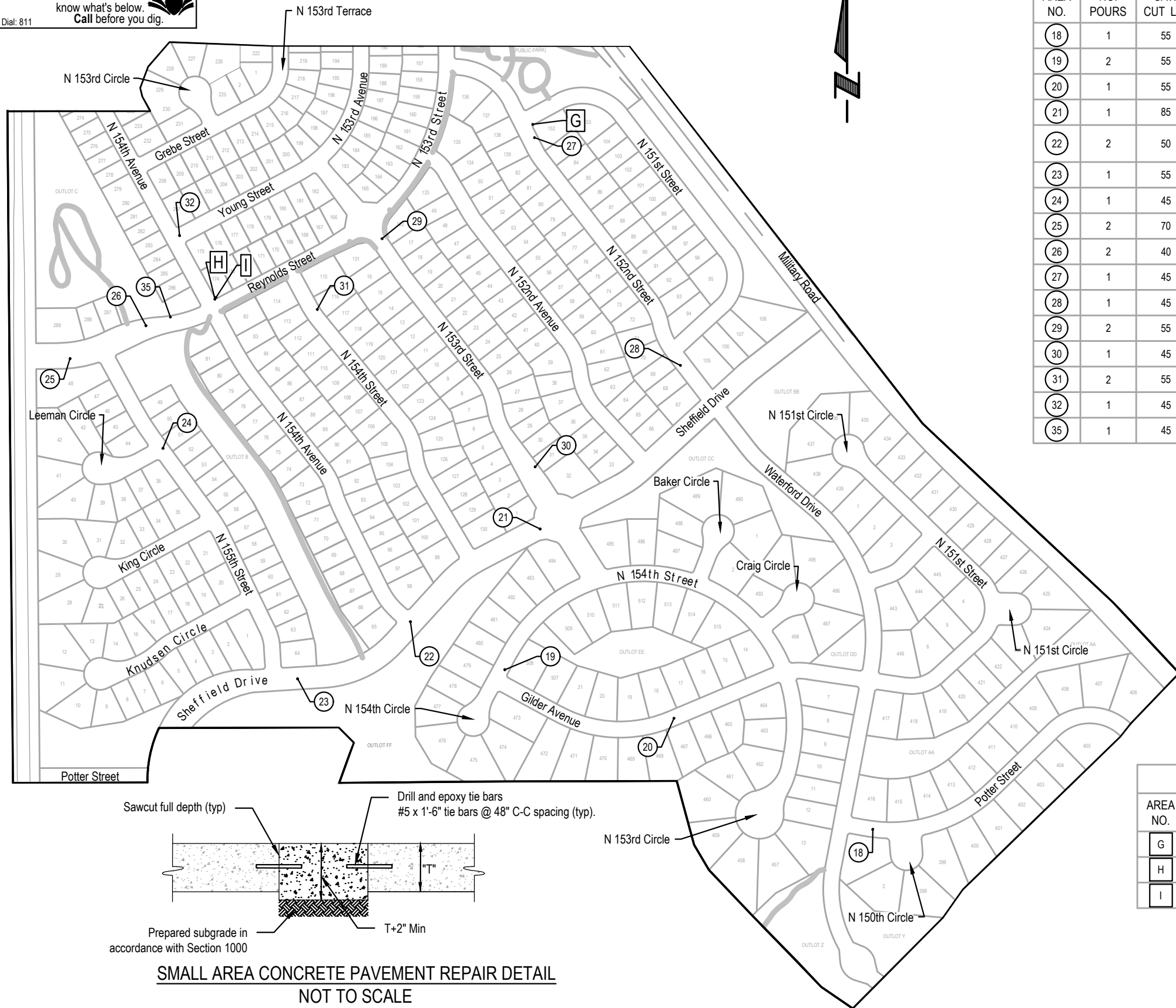
**E & A CONSULTING GROUP, INC.**  
Engineering Answers

**MEADOW RIDGE-WATERFORD 2023 STREET RECONSTRUCTION**  
SID 484  
DOUGLAS COUNTY, NEBRASKA

**SOUTH**

Proj No: P2003201027  
Date: 6/06/2023  
Designed By: TAMM  
Drawn By: JMB  
Scale: 1" = 30'  
Sheet: 3 of 7

6/9/2023 3:00 PM  
K:\Projects\2003\201\p27\Engineering\CAD Files\paving\meadow ridge-waterford 2023 Street Reconstruction-000.dwg  
Jessica Brown



**SMALL AREA CONCRETE PAVEMENT REPAIR DETAIL**  
NOT TO SCALE

2023 STREET RECONSTRUCTION									
AREA NO.	NO. POURS	SAW CUT L.F.	CURB L.F.	WIDTH	X	LENGTH	LARGE AREA EST S.Y.	SMALL AREA EST S.Y.	NOTES
18	1	55	30	12.5	x	30.0		41.7	
19	2	55	30	12.5	x	30.0		41.7	
20	1	55	30	12.5	x	30.0		41.7	
21	1	85	45	17.0	x	45.0	85.0		
22	2	50	120	25.0	x	60.0	166.7		Install (1) "BUMP" Speed Table Striping
23	1	55	30	12.5	x	30.0		41.7	
24	1	45	15	12.5	x	15.0		20.8	
25	2	70	45	12.5	x	45.0	62.5		
26	2	40	15	15.0	x	25.0		41.7	
27	1	45	15	12.5	x	15.0		20.8	
28	1	45	15	12.5	x	15.0		20.8	
29	2	55	30	12.5	x	35.0		48.6	
30	1	45	15	12.5	x	15.0		20.8	
31	2	55	30	12.5	x	30.0		41.7	
32	1	45	15	12.5	x	15.0		20.8	
35	1	45	15	13	x	15		21	

2023 STREET RECONSTRUCTION					
AREA NO.	TYPE	APPROX. DIMEN.		EST S.F.	NOTES
G	Curb Ramp	6	x 6	36.0	ADA Plate - Cast Iron
H	Curb Ramp	7.5	x 8	60.0	ADA Plate - Cast Iron
I	Sidewalk	4	x 8	32.0	



**E & A CONSULTING GROUP, INC.**  
Engineering • Planning • Environmental & Field Services  
10809 Mill Valley Road, Suite 100 • Omaha, NE 68154  
Phone: 402.955.4700 • Fax: 402.955.3559  
www.eandagroup.com  
State of NE Certificate of Authorization #CA0008

---

**E & A CONSULTING GROUP, INC.**  
Engineering Answers

---

**MEADOW RIDGE-WATERFORD  
2023 STREET  
RECONSTRUCTION**  
SID 484  
DOUGLAS COUNTY, NEBRASKA

---

**CENTRAL**

---

Revisions	Date	Description

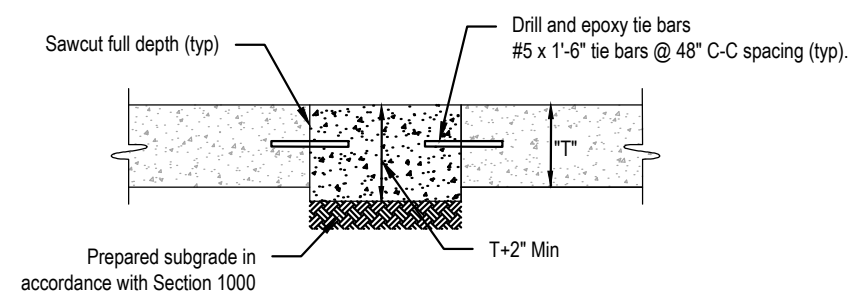
---

Proj No: E-2023-027  
Date: 8/09/2023  
Designed By: TAM  
Drawn By: JME  
Scale: 1" = 30'  
Sheet: 4 of 7



2023 STREET RECONSTRUCTION									
AREA NO.	NO. POURS	SAW CUT L.F.	CURB L.F.	WIDTH	X	LENGTH	LARGE AREA EST S.Y.	SMALL AREA EST S.Y.	NOTES
33	1	16	10	3.0	x	10.0		3.3	Curb Inlet Throat
34	1	45	15	12.5	x	15.0		20.8	
36	1	55	30	12.5	x	30.0		41.7	
37	1	48		12.5	x	12.0		16.7	
38	1	45	15	12.5	x	15.0		20.8	
39	2	55	30	12.5	x	30.0		41.7	
40	1	45	15	12.5	x	15.0		20.8	
41	1	30	20	10.0	x	30.0		33.3	
42	2	105	60	12.5	x	45.0	62.5		
				12.5	x	15.0	20.8		

2023 STREET RECONSTRUCTION				
AREA NO.	TYPE	APPROX. DIMEN.	EST S.F.	NOTES
J	Curb Ramp	5 x 7	35.0	ADA Plate - Cast Iron
K	Curb Ramp	5 x 20	100.0	ADA Plate - Cast Iron
L	Curb Ramp	5 x 7	35.0	
M	Sidewalk	4 x 8	32.0	
N	Curb Ramp	5 x 7	35.0	ADA Plate - Cast Iron
O	Curb Ramp	5 x 20	100.0	



**E & A CONSULTING GROUP, INC.**  
 Engineering • Planning • Environmental & Field Services

**E & A CONSULTING GROUP, INC.**  
 Engineering Answers

**MEADOW RIDGE-WATERFORD**  
 2023 STREET  
 RECONSTRUCTION  
 SID 484  
 DOUGLAS COUNTY, NEBRASKA

**NORTH**

Proj No: F2003.201.027  
 Date: 8/09/2023  
 Design: TMM  
 Drawn By: JMB  
 Scale: 1" = 30'  
 Sheet: 5 of 7

6/9/2023 3:00 PM  
 Jessica Brown



2023 STREET RECONSTRUCTION									
AREA NO.	NO. POURS	SAW CUT L.F.	CURB L.F.	WIDTH	X	LENGTH	LARGE AREA EST S.Y.	SMALL AREA EST S.Y	NOTES
1	1	50	30	10.0	x	30.0		33.3	
2	2	50	20	12.5	x	30.0		41.7	
3	1	45	15	12.5	x	15.0		20.8	
4	2	85		12.5	x	45.0	62.5		
5	1	55	30	12.5	x	30.0		41.7	
6	1	45	15	12.5	x	15.0		20.8	
7	1	45	15	12.5	x	15.0		20.8	
8	1	85	45	12.5	x	45.0	62.5		
9	1	45	15	12.5	x	15.0		20.8	
10	2	50	30	25.0	x	30.0	83.3		
11	1	20	15	10.0	x	10.0		11.1	
12	1	55		12.5	x	15.0		20.8	
13	2	115	45	12.5	x	15.0	20.8		
				15.0	x	25.0	41.7		
14	2	115	45	15.0	x	25.0	41.7		Adjust Manhole
				12.5	x	65.0	90.3		
15	2	50	15	15.0	x	25.0		41.7	
16	1	45	15	12.5	x	15.0		20.8	
17	1	55		12.0	x	30.0		40.0	
18	1	55	30	12.5	x	30.0		41.7	
19	2	55	30	12.5	x	30.0		41.7	
20	1	55	30	12.5	x	30.0		41.7	
21	1	85	45	17.0	x	45.0	85.0		
22	2	50	120	25.0	x	60.0	166.7		Install (1) "BUMP" Speed Table Striping
23	1	55	30	12.5	x	30.0		41.7	
24	1	45	15	12.5	x	15.0		20.8	
25	2	70	45	12.5	x	45.0	62.5		
26	2	40	15	15.0	x	25.0		41.7	
27	1	45	15	12.5	x	15.0		20.8	
28	1	45	15	12.5	x	15.0		20.8	
29	2	55	30	12.5	x	35.0		48.6	
30	1	45	15	12.5	x	15.0		20.8	
31	2	55	30	12.5	x	30.0		41.7	
32	1	45	15	12.5	x	15.0		20.8	
33	1	16	10	3.0	x	10.0		3.3	Curb Inlet Throat
34	1	45	15	12.5	x	15.0		20.8	

2023 STREET RECONSTRUCTION									
AREA NO.	NO. POURS	SAW CUT L.F.	CURB L.F.	WIDTH	X	LENGTH	LARGE AREA EST S.Y.	SMALL AREA EST S.Y	NOTES
35	1	45	15	12.5	x	15.0		20.8	
36	1	55	30	12.5	x	30.0		41.7	
37	1	48		12.5	x	12.0		16.7	
38	1	45	15	12.5	x	15.0		20.8	
39	2	55	30	12.5	x	30.0		41.7	
40	1	45	15	12.5	x	15.0		20.8	
41	1	30	20	10.0	x	30.0		33.3	
42	2	105	60	12.5	x	45.0	62.5		
				12.5	x	15.0	20.8		

2023 STREET RECONSTRUCTION					
AREA NO.	TYPE	APPROX. DIMEN.		EST S.F.	NOTES
A	Curb Ramp	5.5	x 8	44.0	
B	Sidewalk	4	x 25	100.0	
C	Curb Ramp	5.5	x 8	44.0	ADA Plate - Cast Iron
D	Sidewalk	4	x 8	32.0	
E	Curb Ramp	5	x 6	30.0	
F	Sidewalk	4	x 8	32.0	
G	Curb Ramp	6	x 6	36.0	ADA Plate - Cast Iron
H	Curb Ramp	7.5	x 8	60.0	ADA Plate - Cast Iron
I	Sidewalk	4	x 8	32.0	
J	Curb Ramp	5	x 7	35.0	ADA Plate - Cast Iron
K	Curb Ramp	5	x 20	100.0	ADA Plate - Cast Iron
L	Curb Ramp	5	x 7	35.0	
M	Sidewalk	4	x 8	32.0	
N	Curb Ramp	5	x 7	35.0	ADA Plate - Cast Iron
O	Curb Ramp	5	x 20	100.0	

2023 STREET RECONSTRUCTION - SPEED TABLE					
AREA NO.	TYPE	APPROX. DIMEN.		EST S.Y.	NOTES
1	Speed Table	22	x 25	61.1	See City of Omaha Standard Plate 911-01 Sheet 2 of 2 and Section 911 of City of Omaha Standard Specifications for Public Works Construction 2020



MEADOW RIDGE-WATERFORD  
2023 STREET  
RECONSTRUCTION  
SID 484  
DOUGLAS COUNTY, NEBRASKA

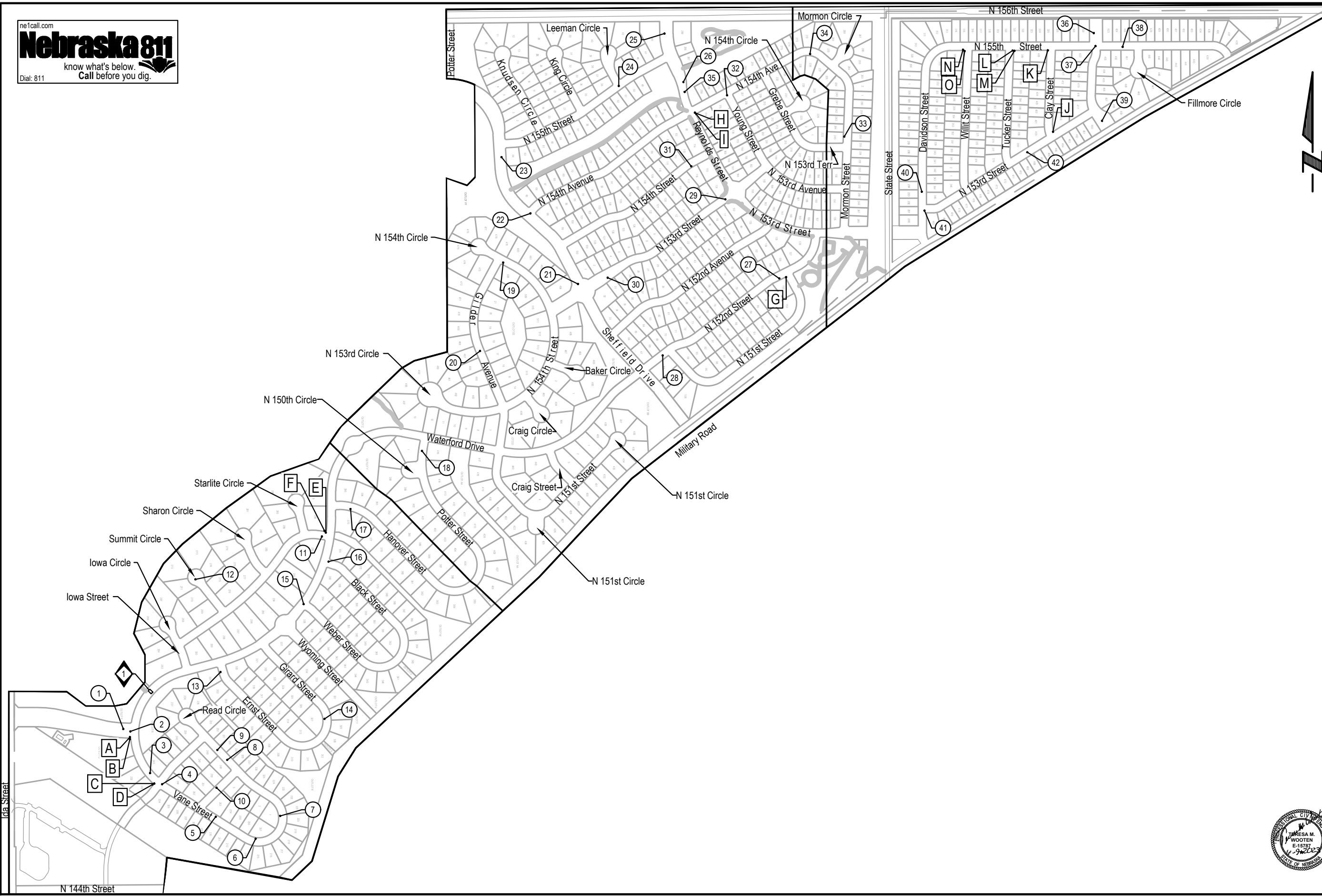
E & A CONSULTING GROUP, INC.  
Engineering • Planning • Environmental & Field Services  
10809 Mill Valley Road, Suite 100 • Omaha, NE 68154  
Phone: 402.265.4700 • Fax: 402.265.3559  
www.eandagroup.com  
State of NE Certificate of Authorization #CA0008

**TOTAL QUANTITIES**

Proj No: P2003201027  
Date: 6/09/2023  
Designed By: TMM  
Drawn By: JME  
Scale: N/A  
Sheet: 6 of 7

Revisions  
Date Description

6/9/2023 3:00 PM  
Jessica Brown



Revisions	Date	Description
1	8/09/2023	TAM
2		JAE

COMPOSITE MAP

MEADOW RIDGE-WATERFORD  
2023 STREET  
RECONSTRUCTION  
SID 484  
DOUGLAS COUNTY, NEBRASKA



E & A CONSULTING GROUP, INC.  
Engineering • Planning • Environmental & Field Services  
10809 Mill Valley Road, Suite 100 • Omaha, NE 68154  
Phone: 402.955.4700 • Fax: 402.955.3559  
State of NE Certificate of Authorization #CA0008